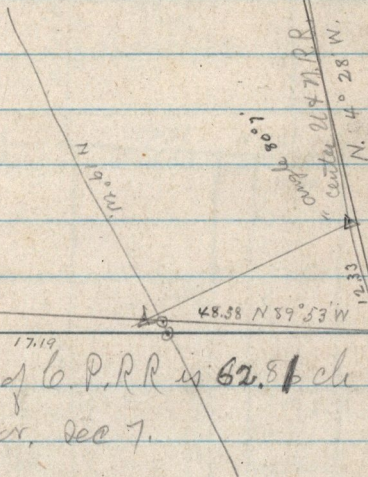


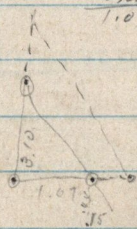
14.95
 S.E. 1/4 Sec 27 - T7 N R1E W²⁰ Burm



54° 55' 57" 17.19
 S. E. 1/4 of C.P.R.R. is 62.81 ch W from
 S.E. cor. Sec 7.

S.E. cor Sec 7.
 T6 N R1 W

341 366
 34 36
 19 30
 48.58 5.92 N 4.22 W
 14.95 47.86
 63.53 14.95
 80.00 62.81
 16.47 8.0
 17.19 17.19



14.95
 13.88
 1.07

6281
 40.
 2281 2.90
 2388 1.07
 107 2030
 10. 2980
 8.93 3103
 002
 08
 016
 008
 0.096

62.81 22.81
 40 13.88
 22.81 8.93
 13.88 10.
 8.93 1.07

3.10
 310
 3100
 930
 9.5100 90 216
 11449 19 3.1030
 0.7549 71 107
 107
 107
 107
 107